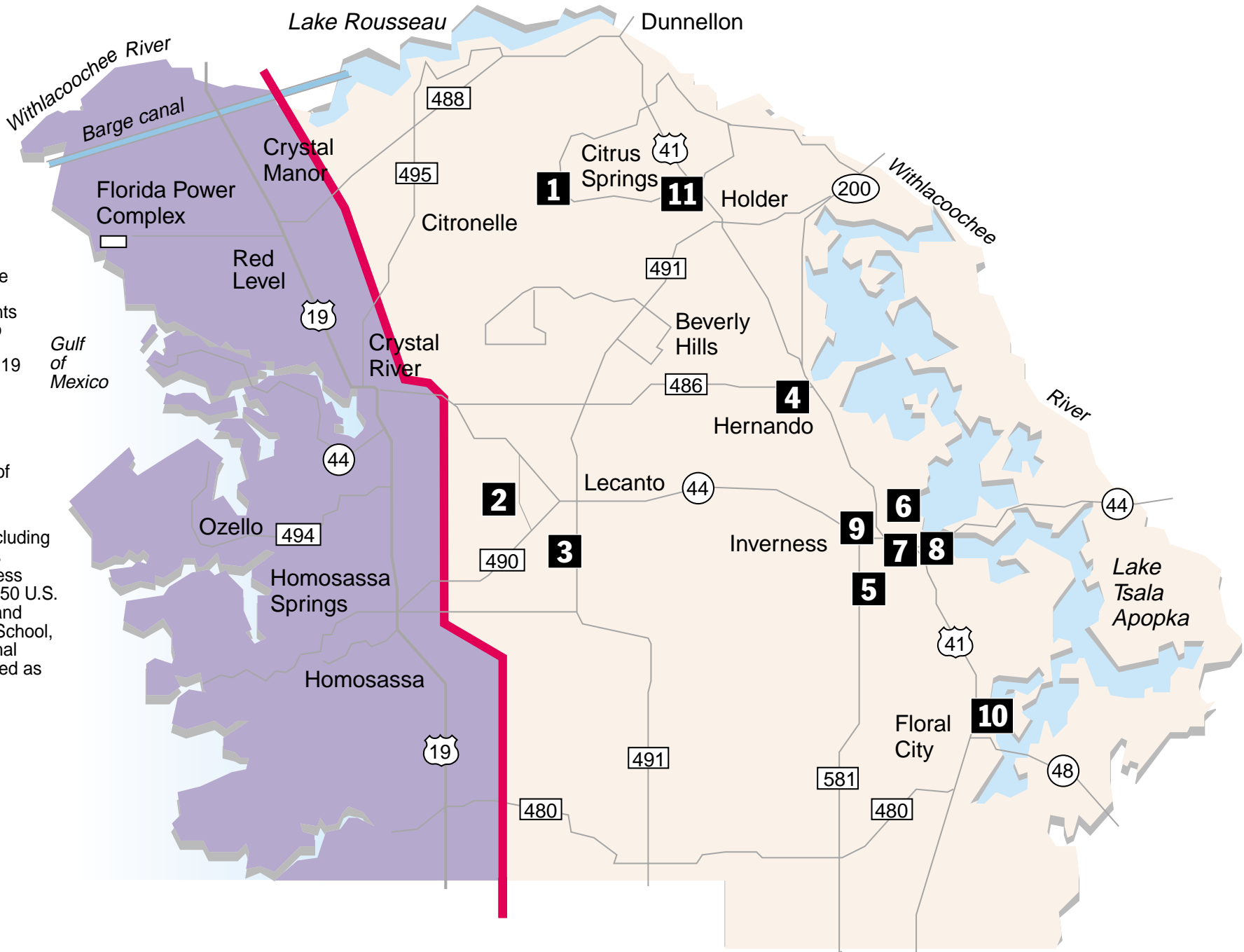


Citrus evacuation zones

Red Cross shelters

Should a hurricane threaten Citrus County, all residents west of U.S. 19 to one and one half miles east of U.S. 19 must evacuate. Residents who do not have another safe place to wait through the storm should go to one of the Red Cross shelters.

Other shelters, including two special-needs shelters at Inverness Middle School, 1950 U.S. 41 N, Inverness, and Lecanto Primary School, 3790 W Educational Path, will be opened as needed.



Those who must evacuate:

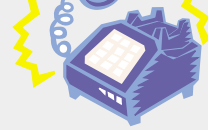
All who live within the purple area on the map, all mobile home residents and those in unsafe structures.

Residents with questions about which shelter to go to should call the Emergency Management Center at 726-4488 or 746-6555.

Other citizen information lines: 527-2106 or 746-5470

- 1 Citrus Springs Elementary School**, 3570 W Century Blvd.
 - 2 Rock Crusher Elementary School**, 100 Rock Crusher Road
 - 3 Lecanto Complex, *** 3790 W Educational Path
 - 4 Hernando Elementary School**, 2353 N Croft Road
 - 5 Pleasant Grove Elementary School**, 630 Pleasant Grove Road
 - 6 Inverness Middle School, *** 1950 U.S. 41 N
 - 7 Citrus High**, 600 W Highland Blvd.
 - 8 Inverness Elementary**, 206 S Line St.
 - 9 Withlacoochee Technical Educational**, 1201 W Main St.
 - 10 Floral City Elementary**, Marvin Street and Old Floral City Road
 - 11 Citrus Springs Middle School**, 150 W Citrus Springs Blvd.
- * Denotes special needs centers

EMERGENCY INFORMATION



911 Emergency requiring police, fire or medical assistance.

Do not call 911 for hurricane information

- (352) 564-8455** American Red Cross (Florida's Coast to Coast Chapter)
- 726-1551** Citrus Memorial Hospital, Inverness
- 795-6560** Seven Rivers Community Hospital, Crystal River
- 746-6555** Emergency Management Center (for advance registration and need assessment of homebound and special needs residents.)
- or 726-4488, ext. 356 or 210**

On the Web:

National Hurricane Center — <http://www.nhc.noaa.gov>

Radio and television

Radio and television stations will broadcast emergency information and hurricane advisories about Citrus County and surrounding communities. Tune to your local stations.

HURRICANE TRACKING CHART

When a hurricane is threatening land, newspapers and radio and television stations will give its latest position in latitude and longitude. The latitude scale is the vertical numbers at right. The longitude scale is the horizontal numbers across the bottom. Plotting a storm's position as a series of points lets you follow its track.

